

**SUMMARY**

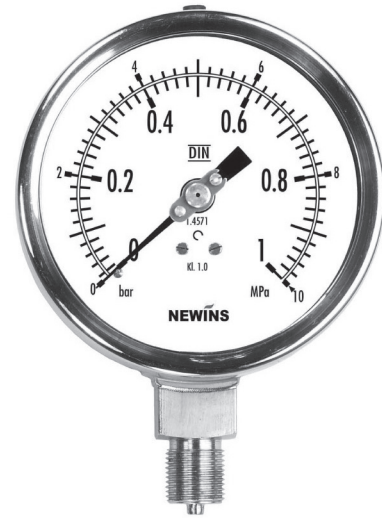
NP-302D Series are pretty, high precision pressure gauge.

This is because the cover and the connections were made with stainless steel.

It is suitable for pressure measurement in a place requiring the anti corrosion, wear resistance and durability.

Used in various field such as food industry, power station plant.

It is a pressure gauge suitable for use in corrosive environments.



Model. NP-302D-1(A)

**SPECIFICATIONS**

▶ **Diameter** : 63, 80, 100, 160mm

▶ **Accuracy**

63,80mm : ±1.6% of Full Scale

100,160mm : ±1.0% of Full Scale

▶ **Scale Range** :

63,80mm : -0.1~0 MPa, 0~25 MPa

100,160mm : -0.1~0 MPa, 0~200 MPa

▶ **Working Pressure** :

Static Pressure : 75% of Full Scale

Fluctuating Pressure : 60% of Full Scale

▶ **Working Temperature**

Ambient : -20~65°C

Fluid : -20~80°C

▶ **Pressure connection**

STS 316

▶ **Element**

STS 304, STS 316

C Type Bourdon Tube or Helical Tube

▶ **Case**

STS 304

▶ **Cover**

STS 304

Bayonet Type

▶ **Window**

Safety Glass

▶ **Movement**

STS 304

▶ **Dial**

Aluminum

White Coating

▶ **Pointer**

Aluminum

Black Coating

▶ **Type** :

NP-302D-1 (Rimless Type)

NP-302D-2 (Surface Type)

NP-302D-3 (Flush Mounting Type)

NP-302D-4 (Panel attachment Type)

▶ **Process connection** :

63mm : UNF 7/16, 1/8", 1/4" PT & NPT, PF

80mm : UNF 7/16, 1/4", 3/8", PT & NPT, PF

100mm : UNF 7/16, 1/4", 3/8", 1/2" PT & NPT, PF

160mm : UNF 7/16, 1/4", 3/8", 1/2" PT & NPT, PF

▶ **Option** :

Blow out protection on the Top Rubber Disc

Bracket

Throttles

Accessories

A

B

C

D

E

F

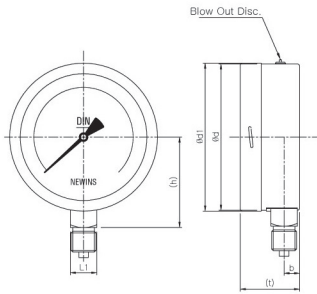
G

H

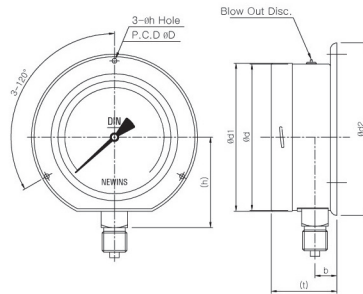
I

J

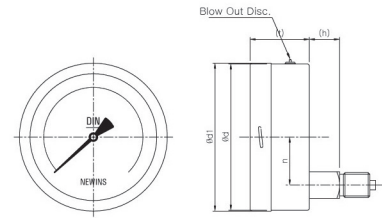
DIMENSION



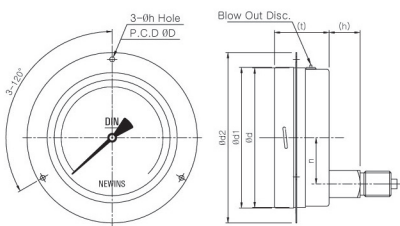
Model. NP-302D-1(A)



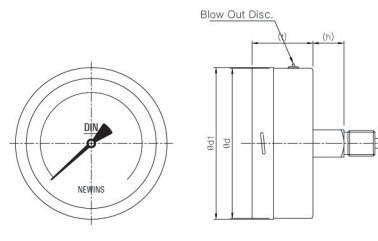
Model. NP-302D-2(B)



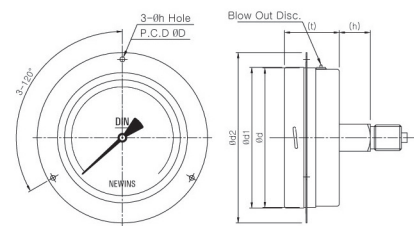
Model. NP-302D-3(D)



Model. NP-302D-4(BD)



Model. NP-302D-3(DC)



Model. NP-302D-4(BDC)

STANDARD SPECIFICATIONS

Dial	Model No.	Dimensions (mm)									
		Ø d	Ø d1	Ø d2	b	n	t	L1	h	Ø h(OB)	Ø D
63	NP-302D-1(A)/2(B)	61.5	63.6	85	9	-	(33)	14	(40.5)	4.5x6.5	75
	NP-302D-3(DC)/4(BDC)			92	-	-			(12.5)		78
80	NP-302D-1(A)/2(B)	77.5	79.5	112	13	-	(40)	17	(53)	4.5x6.5	95
	NP-302D-3(D)/4(BD)			-	22	(16)					
100	NP-302D-1(A)/2(B)	98.7	100.5	132	15	-	(48.5)	22	(66.5)	5.5x8	118
	NP-302D-3(D)/4(BD)			-	32	(20.5)					
160	NP-302D-1(A)/2(B)	157.5	160	192	17	-	(51)	22	(102)	5.5x8	178
	NP-302D-3(D)/4(BD)			-	48	(20)					